



# Industrial Batteries and Energy Storage

VRLA BATTERIES WEBSITE BROCHURE 21



AUSTRALIA

1300 734 253

[sales@valen.com.au](mailto:sales@valen.com.au)  
[www.valen.com.au](http://www.valen.com.au)

NEW ZEALAND

0800 734 253

[sales@valen.co.nz](mailto:sales@valen.co.nz)  
[www.valen.co.nz](http://www.valen.co.nz)



6-12V

# AGM Monobloc Batteries

Valen Topin features a rechargeable, deep cycle, Valve Regulated Lead Acid (VRLA) battery range. VRLA technology is commonly referred to as Sealed Lead Acid (SLA) as the battery electrolyte is suspended in Absorbent Glass Matting (AGM), in comparison to automotive type batteries where the electrolyte is loose. This construction ensures that the Valen Topin battery range is robust, safe and maintenance-free.

Most importantly, the Valen Topin Monobloc battery range holds the CSIRO ActivFire SSL Approval and complies with AS4029.2, making it the battery of choice for the Fire industry. Stringent quality controlled manufacturing and in-house testing allow the Valen Topin to deliver an 8-year design life in standby applications.



## Applications include:



Diesel Genset



Fire



UPS



Security



Road Signage



Automatic Gates



Lifts & Elevators



## Features

### Premium (Valve Regulated Lead Acid) VRLA Design

Valen Topin battery range is able to be installed and operated in any position (except inverted) making it an attractive option for less accessible areas

### Maintenance Free Design

Minimises technician time spent at site and on battery related callouts

### SSL Approval

CSIRO certified for use in the Fire industry (AS 1603.4 Appendix G-1987) ActivFire Certificate: afp-1668

### FAA and IATA Approved

Valen Topin battery range is safe for air transportation



## Specifications

<b>Voltage</b>	6 & 12 Volt nominal
<b>Plates</b>	Heavy Duty
<b>Container</b>	ABS Plastic
<b>Charge Voltage</b>	6V Cycle: 7.2-7.5V at 25°C 6V Float: 6.75-6.9V at 25°C 12V Cycle: 14.4-15.0V at 25°C 12V Float: 13.5-13.8V at 25°C
<b>Design Life</b>	8-years
<b>Electrolyte</b>	Sulphuric Acid
<b>Vent</b>	Self-sealing
<b>Operating Temp*</b>	-20°C to +60°C

\*However Valen recommend the Topin batteries be operated in the temperature range of 20°C to 30°C to obtain full life and optimum performance.

## 6-12V AGM Monobloc Batteries

Product Code	Nom. Cap C/20	Nom. Cap C/10	Terminal ^	Dimensions (mm)			Weight (Kg)	CCA at 0°	Stocked Item
				L	W	H			
6 TP 1.3	1.26	1.21	F1	97	25	52	0.297		✓
6 TP 3.3	3.16	3.01	F1	134	34	59	0.670		✓
6 TP 5	5.02	4.76	F1	70	47	102	0.830		✓
6 TP 7	7.54	7.21	F1	151	34	94	1.2		✓
6 TP 20	20.6	20.2	M5	157	83	125	3.89		✓
12 TP 1.3	1.26	1.21	F1	97	43	53	0.564		✓
12 TP 2.2	2.32	2.22	F1	178	34	60	1.04		✓
12 TP 2.3	2.3	2.1	Flat Plate	182	24	61	0.71		✓
12 TP 2.9	2.98	2.83	F1	79	56	99	1.19		✓
12 TP 3.3	3.16	3.01	F1	134	67	59.5	1.3		✓
12 TP 5 F2	5.58	5.14	F2	90	70	101	1.9		✓
12 TP 7	7	6.82	F1	151	65	94	2.2		✓
12 TP 9	9.02	8.55	F2	151	65	94	2.7		✓
12 TP 12	12.36	12	F2	151	98	93	3.75		✓
12 TP 21	23.2	22.1	M6	181	76	167	6.9	205	✓
12 TP 26	27.2	26.5	M5	166	175	125	9.3	265	✓
12 TP 30	28.4	27	M5	166	125	176	8.8	300	✓
12 TP 33	33.2	31.5	M5	196	130	158	9.9	320	✓
12 TP 40	43.4	41	M6	199	166	171	13.4	350	✓
12 TP 55	59.2	56.5	M6	226	135	207	17	380	✓
12 TP 65	68	65.4	M6	350	167	179	20.9	490	✓
12 TP 70	79.6	76.9	M6	260	170	202	24.2	550	✓
12 TP 90	107.6	102	M6	307	168	208	29.5	680	✓
12 TP 100	104.4	103	M8	329.5	172.3	215	31.3	780	✓
12 TP 120	114	110	M6	338	170	212	32.5	960	✓
12 TP 150	151.2	151	M8	483	170	240	45.5	1300	✓
12 TP 200	212	201	M8	522	238	219	61.5	1440	✓
12 TP 250	260	251	M8	521	269	220	72.8	1880	✓

12V

# Advanced AGM Monobloc Batteries

Valen X-CEL range features a deep cycle, rechargeable, Valve Regulated Lead Acid (VRLA) battery. Based on Absorbent Glass Matting (AGM) construction, the Valen X-CEL range is a safe and maintenance-free battery solution, while carrying additional advantages associated with X-CEL technology.

Unique high purity virgin lead plates incorporating 1.6% tin assist in reducing both battery sulphation and plate delamination, therefore substantially extending the battery's life. Thanks to its technologically advanced construction, the Valen X-CEL 6-12V range proudly offers 10-year design life making it ideal for use in critical standby applications.



## Applications include:



UPS



Security



Comms



Hospitals  
& Medical



Datacentre



Automatic  
Gates



Lifts &  
Elevators



Telemetry



## Features

### Premium (Valve Regulated Lead Acid) VRLA Design

Valen X-CEL battery range is able to be installed and operated in any position (except inverted) making it an attractive option for less accessible areas

### Maintenance Free Design

Minimises technician time spent at site and on battery related callouts

### Advanced X-CEL Technology

High purity virgin lead plates, including the unique tin formula, gives the Valen X-CEL a 10-year standby design life

### FAA and IATA Approved

Valen X-CEL battery range is safe for air transportation



## Specifications

<b>Voltage</b>	12 Volt nominal
<b>Plates</b>	Virgin pure lead/ 1.6% tin grid alloy
<b>Container</b>	ABS Plastic
<b>Charge Voltage</b>	Cycle: 14.4-14.7V at 25°C Float: 13.2-13.8V at 25°C
<b>Design Life</b>	10-years
<b>Electrolyte</b>	Sulphuric Acid
<b>Vent</b>	Self-sealing
<b>Operating Temp*</b>	-20°C to +60°C

\*However Valen recommend the X-CEL batteries be operated in the temperature range of 20°C to 30°C to obtain full life and optimum performance.

## 12V Advanced AGM Monobloc Batteries

Product Code	Nom. Cap C/20	Nom. Cap C/10	Terminal ^	Dimensions (mm)			Weight (Kg)	Stocked Item
				L	W	H		
12 VX 7	7	6.8	F2	151	65	93.5	2.32	✓
12 VX 9	9	8.2	F2	151	65	94	2.80	✓
12 VX 14	12	11.8	F2	151	98	95	4.40	✓
12 VX 21	17	16.9	M5	181	77	167	5.9	✓
12 VX 33	34.6	33.1	M6	195	130	155	11	✓
12 VX 40	42	40.7	M6	197.5	165.5	170	14.7	✓
12 VX 100	105	103	M8	330	171	215	32	–
12 VX 260	262	252	M8	520	269	221	74	✓

### Stock On Hand

With products ready to meet your needs, the team at Valen stock an extensive range of high-quality energy storage solutions.

Utilising effective inventory management systems enables us to ensure your project requirements are built into our purchasing forecasts.

With warehouses conveniently located nationally across Australia and New Zealand, we offer fast and prompt delivery.

12V

# Hybrid Monobloc Batteries

Welcome to one of the newest products of the Valen battery range!

Valen Forte battery range features a Hybrid Gel Valve Regulated Lead Acid (VRLA) battery that is rechargeable, deep cycle and maintenance-free. Whilst the Valen Forte's construction is based on the Absorbed Glass Matting (AGM) technology, this Hybrid Gel battery utilises a combination of AGM separators with liquid Gel Colloidal Silica electrolyte. Valen Forte battery technology gives you the best of both worlds; delivering the advantage of increased cycle life similar to that of a Gel battery, with the lower cost advantage of an AGM battery.



## Applications include:



Hospitals  
& Medical



Floor  
Scrubber



Mobility



Road  
Signage



Golf & Electric  
Vehicles



## Features

### Premium (Valve Regulated Lead Acid) VRLA Design

Valen Forte battery range is able to be installed and operated in any position (except inverted) making it an attractive option for less accessible areas

### Maintenance Free Design

Minimises technician time spent at site and on battery related callouts

### Advanced Hybrid Silica Electrolyte Design

Offers improved cyclic life over a standard AGM battery, whilst maintaining faster current delivery, lower cost and a 10-year design life

### FAA and IATA Approved

Valen Forte battery range is safe for air transportation



## Specifications

<b>Voltage</b>	12 Volt nominal
<b>Plates</b>	Heavy Duty
<b>Container</b>	ABS Plastic
<b>Charge Voltage</b>	Cycle: 13.8-14.5V at 25°C Float: 13.5-13.8V at 25°C
<b>Design Life</b>	10-years
<b>Electrolyte</b>	Sulphuric Acid
<b>Vent</b>	Self-sealing
<b>Operating Temp*</b>	-20°C to +60°C

\*However Valen recommend the Forte batteries be operated in the temperature range of 20°C to 30°C to obtain full life and optimum performance.

## 12V Hybrid Monobloc Batteries

Product Code	Nom. Cap C/20	Nom. Cap C/10	Terminal ^	Dimensions (mm)			Weight (Kg)	Stocked Item
				L	W	H		
12 VF 20	20	19.3	M6	181	76	167	6.7	✓
12 VF 33	34.2	32.7	M6	196	130	158	10.4	✓
12 VF 40	40	38	M6	199	166	171	13.3	✓
12 VF 50	50	47.5	M6	199	166	171	14.8	✓
12 VF 55	56.2	54.2	M6	226	135	207	17	✓
12 VF 70	75.6	72.6	M6	260	170	202	24.8	✓
12 VF 100	103	101	M6	338	170	212	34	✓

### Exceptional Customer Service

**In keeping with Valen's core value to WOW customers through service, we go above and beyond for our clients throughout every interaction.**

This starts from the initial enquiry, product support, invoicing and delivery, all the way through to after-sales support. You can expect to power excellence with Valen!



6-12V

# Gel Monobloc Batteries

Valen Gel range features a rechargeable, deep cycle, Valve Regulated Lead Acid (VRLA) battery. Gel technology varies from its AGM counterpart because the electrolyte is suspended in Thixotropic Silica Gel, unlike the AGM batteries where the electrolyte is suspended in the Absorbent Glass Mat. Genuine Gel technology gives the Valen Gel range an edge over its competition by extending the longevity of the battery and minimising the number of cycles the battery requires to reach its full capacity.

The Valen Gel battery range has met and exceeded all market expectations over the years and continues to prove its excellence thanks to its ability to resist deep discharges and to recover after heavy draining. Stringent quality controlled manufacturing and in-house testing allows the Valen Gel battery to deliver a 10-year design life and can be the economical battery of choice in cyclic applications.



## Applications include:



Hospitals  
& Medical



Floor  
Scrubber



Mobility



Road  
Signage



Golf & Electric  
Vehicles



Comms



Solar



Mining



Telemetry



## Features

### Premium (Valve Regulated Lead Acid) VRLA Design

Valen GEL battery range is able to be installed and operated in any position (except inverted) making it an attractive option for less accessible areas

### Maintenance Free Design

Minimises technician time spent at site and on battery related callouts

### Advanced Thixotropic Silica Gelled Electrolyte

Genuine Gel separators and quality lead plates allow the Valen GEL battery range to offer a 10-year design life

### FAA and IATA Approved

Valen GEL battery range is safe for air transportation



## Specifications

<b>Voltage</b>	6 & 12 Volt nominal
<b>Plates</b>	Heavy Duty
<b>Container</b>	ABS Plastic
<b>Charge Voltage</b>	6V Cycle: 7.2-7.5V at 25°C 6V Float: 6.75-6.9V at 25°C 12V Cycle: 14.1-14.4V at 25°C 12V Float: 13.5-13.8V at 25°C
<b>Design Life</b>	10-years
<b>Electrolyte</b>	Thixotropic Gel - Sulphuric Acid
<b>Vent</b>	Self-sealing
<b>Operating Temp*</b>	-20°C to +60°C

\*However Valen recommend the GEL batteries be operated in the temperature range of 20°C to 30°C to obtain full life and optimum performance.

## 6-12V Gel Monobloc Batteries

Product Code	Nom. Cap C/20	Nom. Cap C/10	Terminal ^	Dimensions (mm)			Weight (Kg)	Stocked Item
				L	W	H		
6 VG 225	248	227	M8	243	188	275	31.3	✓
12 VG 21	18	16.7	M5	181	77	167	5.5	✓
12 VG 26	26	23.1	M5	165	125	175	9	✓
12 VG 33	33	30.6	M6	195	130	158	10.2	✓
12 VG 40	40	37	M6	197	165	170	12.5	✓
12 VG 55	55	50.9	M6	229	138	208	17	✓
12 VG 60	60.8	56.2	M6	260	168	176	19.7	✓
12 VG 70	70	64.8	M6	260	168	215	24	✓
12 VG 100	100	92.6	M6	330	171	214	32	✓

## Training & Support

**How well does your team know batteries, solar or the correct maintenance procedures?**

Valen offers exceptional training and support to ensure your team are qualified and up-skilled in both installation and maintenance of energy storage systems. Training is customised to each client and their systems to provide real value and essential relevant knowledge.

Contact us now on the below details to get your team upskilled!

6-12V

# Gel Monobloc Batteries with Catalyst

Valen ENDUROGEL range features a rechargeable, deep cycle, Valve Regulated Lead Acid (VRLA) battery. Genuine Gel technology allows this battery range to offer the cyclic benefits of the Valen Gel range.

However, the Valen ENDUROGEL battery range outshines the standard Gel battery by incorporating both advanced lead plates and the Catalyst.

High purity virgin lead plates with 1.6% tin extend the longevity of the Valen ENDUROGEL battery. The inclusion of the unique Catalyst Life Extender reduces sulphation and delamination by substantially lowering the rate of battery dry out. This innovative combination allows the Valen ENDUROGEL a design life of 12-years and is ideal for use in mission-critical cyclic applications.



## Applications include:



Hospitals  
& Medical



Datacentre



Automatic  
Gates



Mobility



Road  
Signage



Rail



Comms



Solar



Mining



Telemetry



## Features

### Premium (Valve Regulated Lead Acid) VRLA Design

Valen ENDUROGEL battery range is able to be installed and operated in any position (except inverted) making it an attractive option for less accessible areas

### Maintenance Free Design

Minimises technician time spent at site and on battery related callouts

### Advanced ENDUROGEL Technology

Thixotropic Gelled electrolyte, genuine Gel separators, quality lead plate, and a Catalyst Life Extender allow the Valen ENDUROGEL range to offer a 12-year design life

### Unique Catalyst Life Extender

Prevents battery dry out allowing the Valen ENDUROGEL range to become the battery of choice for mission-critical cyclic applications

### FAA and IATA Approved

Valen ENDUROGEL battery range is safe for air transportation



## Specifications

<b>Voltage</b>	6 & 12 Volt nominal
<b>Plates</b>	Heavy Duty
<b>Container</b>	ABS Plastic
<b>Charge Voltage</b>	6V Cycle: 7.05-7.2V at 25°C 6V Float: 6.75-6.9V at 25°C 12V Cycle: 14.1-14.4V at 25°C 12V Float: 13.5-13.8V at 25°C
<b>Design Life</b>	12-years
<b>Electrolyte</b>	Thixotropic Gel, Sulphuric Acid
<b>Vent</b>	Self-sealing
<b>Operating Temp*</b>	-20°C to +60°C

\*However Valen recommend the ENDUROGEL batteries be operated in the temperature range of 20°C to 30°C to obtain full life and optimum performance.

## 6-12V Gel Monobloc Batteries with Catalyst

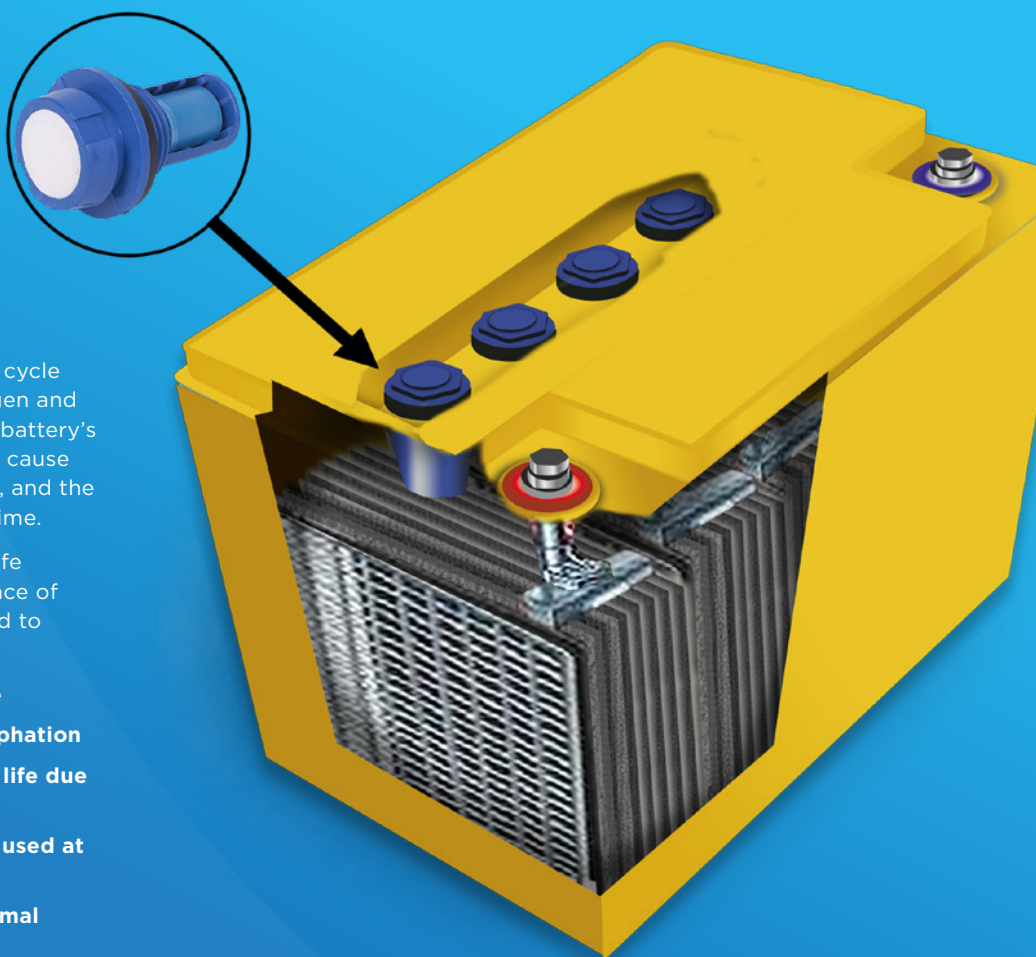
Product Code	Nom. Cap C/100	Nom. Cap C/20	Nom. Cap C/10	Terminal ^	Dimensions (mm)			Weight (Kg)	Stocked Item
					L	W	H		
6 EG 260	260	230	204	M8	243	187	253	35	✓
12 EG 50	50	40	37	M6	197	165	170	12.5	✓
12 EG 60	60	55	50.9	M6	229	138	208	17	✓
12 EG 80	80	70	64.8	M6	260	168	215	24	✓
12 EG 110	110	100	92.6	M6	330	171	214	32	✓
12 EG 170	170	150	139	M8	485	172	240	44	✓
12 EG 220	220	200	185	M8	522	238	222	66	✓
12 EG 300	300	250	231	M8	521	269	220	75	✓

### Catalyst Life Extender

During the charge and discharge cycle of all Lead Acid batteries, hydrogen and oxygen are released through the battery's vents. This chemical reaction can cause the battery to become sulphated, and the battery plates depolarised over time.

With Valen's exclusive Catalyst Life Extender installed in the headspace of the battery, gases are recombined to deliver benefits such as:

- **Lengthened battery design life**
- **Reduced cell failure due to sulphation**
- **Extended battery float service life due to reduced plate corrosion**
- **Maintains full design life when used at temperatures up to 30°C**
- **Reduces the possibility of thermal runaway**



12V

# Advanced AGM Front Terminal

Valen X-CEL range features a deep cycle, rechargeable, Valve Regulated Lead Acid (VRLA) battery. Based on Absorbent Glass Matting (AGM) construction, the Valen X-CEL range is a safe and maintenance-free battery solution, while carrying the advantages of the X-CEL technology.

Unique high purity virgin lead plates incorporating 1.6% tin assist in reducing both battery sulphation and plate delamination, therefore substantially extending the battery's life. Valen X-CEL Front Terminal battery's slimline design allows it to be retrofitted into 19-inch racking for a compact and effective battery system suited for communication and UPS applications. A narrow profile with the terminals across the front means the batteries are easily accessible for both installation and maintenance.



## Applications include:



UPS



Comms



Datacentre



Mining



Rail



## Features

### Premium (Valve Regulated Lead Acid) VRLA Design

Valen X-CEL battery range is able to be installed and operated in any position (except inverted) making it an attractive option for less accessible areas

### Maintenance Free Design

Minimises technician time spent at site and on battery related callouts

### Advanced X-CEL Technology

High purity virgin lead plates, including the unique tin formula, gives the Valen X-CEL a 10-year standby design life

### Specialised Valen Front Terminal Design

Includes terminal protection cover, insulated intercell links, ventilation holes for optional external venting, as well as being designed for easy installation into 19-inch racks

### FAA and IATA Approved

Valen X-CEL battery range is safe for air transportation.

Customised battery racking and cabinetry available on request. For more details call the team today.



## Specifications

<b>Voltage</b>	12 Volt nominal
<b>Plates</b>	Virgin pure lead/ 1.6% tin grid alloy
<b>Container</b>	ABS Plastic
<b>Charge Voltage</b>	Cycle: 14.4-14.7V at 25°C Float: 13.2-13.8V at 25°C
<b>Design Life</b>	10-years
<b>Electrolyte</b>	Sulphuric Acid
<b>Vent</b>	Self-sealing
<b>Operating Temp*</b>	-20°C to +60°C*

\*However Valen recommend the X-CEL batteries be operated in the temperature range of 20°C to 30°C to obtain full life and optimum performance.

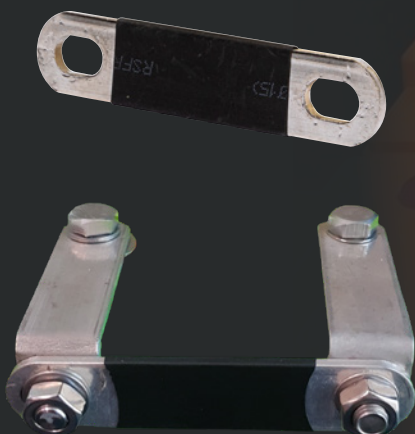
## 12V Advanced AGM Front Terminal

Product Code	Nom. Cap C/10	Nom. Cap C/5	Terminal ^	Dimensions (mm)			Weight (Kg)	Stocked Item
				L	W	H		
12 VXFT 100	105	95	M8	395	110	286	35	–
12 VXFT 155	156	142	M8	551	110	316	51.5	–
12 VXFT 190	181	161.5	M8	546	125	317	58.5	–

## Battery Links

Valen supply battery link kits to ensure your system installation is hassle-free! These system links work in with Valen's standard battery racking.

We understand that there is not always one fix, so ask us about customised links!



12V

# Carbon Front Terminal

Valen ENVIROX-CEL Front Terminal range features a rechargeable, deep cycle, Valve Regulated Lead Acid (VRLA) battery. The Valen ENVIROX-CEL battery construction is based on the Absorbent Glass Matting (AGM) safe and maintenance-free technology. However, the Valen ENVIROX-CEL is manufactured with unique high purity virgin lead plates, incorporating calcium, allowing for an extremely long float life performance.

Valen ENVIROX-CEL Front Terminal's slimline design allows it to be retrofitted into 19-inch racking for a compact and effective battery system. A narrow profile with the terminals across the front means the terminals are easily accessed for both installation and maintenance. These Front Terminal batteries have the capability to be exteriorly ventilated with optional ventilation tubing available. Stringent quality controlled manufacturing and in-house testing enables the Valen ENVIROX-CEL Front Terminal battery range to deliver a 12-year design life.



## Applications include:



UPS



Comms



Datacentre



Mining



Rail



## Features

### Premium (Valve Regulated Lead Acid) VRLA Design

Valen ENVIROX-CEL battery range is able to be installed and operated in any position (except inverted) making it an attractive option for less accessible areas

### Maintenance Free Design

Minimises technician time spent at site and on battery related callouts

### Advanced Carbon Design

Valen ENVIROX-CEL's inclusion of Carbon allows for an extremely long float life performance with a 12-year standby design life

### Specialised Valen Front Terminal Design

Includes terminal protection cover, insulated intercell links, ventilation holes for optional external venting, as well as being designed for easy installation into 19-inch racks

### FAA and IATA Approved

Valen ENVIROX-CEL battery range is safe for air transportation

Customised battery racking and cabinetry available on request. For more details call the team today.



## Specifications

<b>Voltage</b>	12 Volt nominal
<b>Plates</b>	Virgin pure lead/ Lead-Calcium-Tin-Alloy
<b>Container</b>	ABS Plastic
<b>Charge Voltage</b>	Cycle: 14.4V at 25°C Float: 13.62V at 25°C
<b>Design Life</b>	12-years
<b>Electrolyte</b>	Sulphuric Acid
<b>Vent</b>	Self-sealing
<b>Operating Temp*</b>	-20°C to +60°C*

\*However Valen recommend the ENVIROX-CEL batteries be operated in the temperature range of 20°C to 30°C to obtain full life and optimum performance.

## 12V Carbon Front Terminal

Product Code	Nom. Cap C/10	Nom. Cap C/5	Terminal ^	Dimensions (mm)			Weight (Kg)	Stocked Item
				L	W	H		
12 EOFT 100	101	88	M6	398	110	286	33.2	✓
12 EOFT 155	157	136	M6	550	110	285	49.0	✓
12 EOFT 190	192	167	M6	555	125	316	61	–

## Exterior Ventilation Tubing

In some cases, external ventilation of battery systems is required.

External ventilation may be needed to reduce internal fumes and the detrimental effect that they can have on electrical equipment such as switchboards. That's why Valen's Front Terminal ranges all come with optional Battery Ventilation Tubing.

**Reach out to us to exteriorly ventilate your next Front Terminal Battery project!**

12V

# Gel Front Terminal with Catalyst

Valen ENDUROGEL range features a rechargeable, deep cycle, Valve Regulated Lead Acid (VRLA) battery. Genuine Gel technology allows this battery range to offer the cyclic benefits of the Valen Gel range.

However, the Valen ENDUROGEL range outshines the standard Gel battery by incorporating both advanced lead plates and the Catalyst.

High purity virgin lead plates with 1.6% tin extend the longevity of the Valen ENDUROGEL battery. Inclusion of the unique Catalyst Life Extender reduces sulphation and delamination while substantially preventing battery dry out.

Valen Front Terminal's slimline design allows the battery to be retrofitted into 19-inch racking for a compact and effective battery system. Stringent quality controlled manufacturing and in-house testing gives the Valen ENDUROGEL Front Terminal range the ability to deliver a 15-year design life, as well as being the Front Terminal battery of choice in mission-critical cyclic applications.



## Applications include:



UPS



Comms



Datacentre



Mining



Rail



Solar



## Features

### Premium (Valve Regulated Lead Acid) VRLA Design

Valen ENDUROGEL battery range is able to be installed and operated in any position (except inverted) making it an attractive option for less accessible areas

### Maintenance Free Design

Minimises technician time spent at site and on battery related callouts

### Advanced ENDUROGEL Technology

Thixotropic Gelled electrolyte, genuine Gel separators, quality lead plates and a Catalyst Life Extender allow the Valen ENDUROGEL range to offer a 15-year design life

### Specialised Valen Front Terminal Design

Includes terminal protection cover, insulated intercell links, ventilation holes for optional external venting, as well as being designed for easy installation into 19-inch racks

### Unique Catalyst Life Extender

Prevents battery dry out allowing the Valen ENDUROGEL range to become the battery of choice for mission-critical cyclic applications

### FAA and IATA Approved

Valen ENDUROGEL battery range is safe for air transportation



## Specifications

<b>Voltage</b>	12 Volt nominal
<b>Plates</b>	Heavy Duty
<b>Container</b>	ABS Plastic
<b>Charge Voltage</b>	Cycle: 14.4-15.0V at 25°C Float: 13.5-13.8V at 25°C
<b>Design Life</b>	15-years
<b>Electrolyte</b>	Thixotropic Gel Sulphuric Acid
<b>Vent</b>	Self-sealing
<b>Operating Temp*</b>	-20°C to +60°C*

\*However Valen recommend the ENDUROGEL batteries be operated in the temperature range of 20°C to 30°C to obtain full life and optimum performance.

Customised battery racking and cabinetry available on request (page 89). For more details call the team today.

## 12V Gel Front Terminal with Catalyst

Product Code	Nom. Cap C/10	Nom. Cap C/5	Terminal ^	Dimensions (mm)			Weight (Kg)	Stocked Item
				L	W	H		
12 EGFT 100	95.2	83	M6	395	110	286	31	✓
12 EGFT 155	156	135.5	M8	550	110	288	46.5	✓
12 EGFT 175	172	149.5	M8	546	125	317	57	–



## How well are your batteries performing?

Valen's full range of battery testers ensures there is a way of finding out just how reliable your battery system is!

We stock quick indicative battery testers for onsite inspections, cyclic discharge load testers for accurate analytical tests and reporting, or impedance testers with the software for online storage and reporting.

12V

## Advanced Carbon Front Terminal

Valen ENVIROX-CELPlus range features a rechargeable, deep cycle, Valve Regulated Lead Acid (VRLA) battery. Advanced Graphitic Carbon and Carbon Black Blend in the active material allow the ENVIROX-CELPlus+ to recharge faster, increasing the batteries efficiency for operation in harsh environments.

Valen ENVIROX-CELPlus range is designed for endurance in higher temperature standby environments of up to 65°C. Shock resistant and flame retardant casing have been utilised in the construction of the Valen ENVIROX-CELPlus battery to increase its resistance to the outside temperatures.

Valen Front Terminal's slimline design allows the battery to be retrofitted into 19-inch racking for a compact and effective battery system. Stringent quality controlled manufacturing and in-house testing gives the Valen

ENVIROX-CELPlus Front Terminal range the ability to deliver a 15-year design life, as well as being the Front Terminal battery of choice for critical standby applications or sites with an unstable grid.



### Applications include:



UPS



Comms



Datacentre



Mining



Rail



Solar



### Features

#### Premium (Valve Regulated Lead Acid) VRLA Design

Valen ENVIROX-CELPlus battery range is able to be installed and operated in any position (except inverted) making it an attractive option for less accessible areas

#### Maintenance Free Design

Minimises technician time spent at site and on battery related callouts

#### Advanced Carbon Design

Valen ENVIROX-CELPlus's inclusion of Carbon allows for an extremely long float life performance with a 15-year standby design life

#### Specialised Valen Front Terminal Design

Includes terminal protection cover, insulated intercell links, ventilation holes for optional external venting, as well as being designed for easy installation into 19-inch racks

#### FAA and IATA Approved

Valen ENVIROX-CELPlus battery range is safe for air transportation

Customised battery racking and cabinetry available on request. For more details call the team today.



### Specifications

Voltage	12 Volt nominal
Plates	Virgin pure lead/ Lead-Calcium-Tin Alloy
Container	ABS Plastic
Charge Voltage	Cycle: 14.4V at 25°C Float: 13.62V at 25°C
Design Life	15-years
Electrolyte	Sulphuric Acid
Vent	Self-sealing
Operating Temp*	-20°C to +65°C*

\*However Valen recommend the ENVIROX-CELPlus+ batteries be operated in the temperature range of 20°C to 30°C to obtain full life and optimum performance.

## 12V Advanced Carbon Front Terminal

Product Code	Nom. Cap C/10	Nom. Cap C/5	Terminal ^	Dimensions (mm)			Weight (Kg)	Stocked Item
				L	W	H		
12 EO+FT 100	104	90.5	M8	400	110	286	32.8	✓
12 EO+FT 150	152	132	M8	557	125	316	58.9	—
12 EO+FT 190	192	167	M8	557	125	316	62	—



## In-house Testing Facilities

Our clients deserve reassurance that their batteries are going to last in their systems, so we ensure all of our products are manufactured following Australian Standards and quality controlled in-house.

Battery testing in-house includes:

- **Physical examination; dimensions, terminals, labels**
- **Weight examination**
- **3x cyclic discharge test**
- **Impedance test**
- **Battery lead and chemical testing**



2V

# Gel Batteries with Catalyst

Valen ENDUROGEL 2V range features a rechargeable, deep cycle, Valve Regulated Lead Acid (VRLA) battery. Genuine Gel technology allows this range to offer the cyclic benefits of the Valen Gel battery range.

However, the Valen ENDUROGEL range outshines the standard Gel battery by incorporating both advanced lead plates and the Catalyst.

High purity virgin lead plates with 1.6% tin extend the longevity of the Valen ENDUROGEL battery. Inclusion of the unique Catalyst Life Extender reduces sulphation and delamination while substantially preventing battery dry out.

The Valen ENDUROGEL 2V range configuration allows for safe and secure installation and maintenance especially prevalent in higher capacity cyclic power systems. Stringent quality controlled manufacturing and in-house testing gives the Valen ENDUROGEL 2V battery the ability to deliver a 20-year design life, as well as being the 2V battery of choice in demanding cyclic applications.



## Applications include:



UPS



Comms



Datacentre



Mining



Rail



Solar



## Features

### Premium Valve Regulated Lead Acid (VRLA) Design

Valen Gel battery range is able to be installed and operated in any position (except inverted) making it an attractive option for less accessible areas

### Maintenance-Free Design

Minimises technician time spent at site and on battery related callouts

### Advanced ENDUROGEL Technology

Thixotropic Gelled electrolyte, genuine Gel separators, quality lead plates, and a Catalyst Life Extender allow the Valen ENDUROGEL range to offer a 15-year design life

### Unique Catalyst Life Extender

Prevents battery dry out allowing the Valen ENDUROGEL range to become the battery of choice for mission-critical cyclic applications

### Specialised Valen 2V Design

Includes a protective terminal cover as well as insulated intercell links

### Racking Available

Standard and Modular racking is available. Valen provides customised racking ensuring that there is always a solution to fit your site

### FAA and IATA Approved

Valen ENDUROGEL battery range is safe for air transportation



## Specifications

<b>Voltage</b>	2 Volt nominal
<b>Plates</b>	Heavy Duty
<b>Container</b>	ABS Plastic
<b>Charge Voltage</b>	Cycle: 2.40-2.45V at 25°C Float: 2.20-2.30V at 25°C
<b>Design Life</b>	20-years
<b>Electrolyte</b>	Thixotropic Gel Sulphuric Acid
<b>Vent</b>	Self-sealing
<b>Operating Temp*</b>	-20°C to +60°C*

\*However Valen recommend the ENDUROGEL batteries be operated in the temperature range of 20°C to 30°C to obtain full life and optimum performance.

Product Code	Nom. Cap C/10	Terminal ^	Dimensions (mm)			Weight (Kg)	Stocked Item
			L	W	H		
2 EG 500	512	M8	242	173	330	33	✓
2 EG 1000	1010	M8	475	175	330	63.5	✓

## Efficient System Design

At Valen, we pride ourselves on being a life system support to our clients. The team at Valen are here to work with you throughout the life of your project; design, supply, installation, commissioning, maintenance and follow-up support.

Valen's capabilities to offer a complete efficient system design include:

- **High-quality reliable products that deliver on their promise**
- **Advanced inventory management control**
- **Expert technical advice**
- **On-time, lower cost supply**
- **Ongoing support and on-site training**

Work with the team at Valen to help guide you through the complete process.

2V

# Gel Batteries with Sliding Pole

Valen OPzV battery range features a tubular plated Gel battery. Like with all Valen's battery ranges, the OPzV battery range is rechargeable, deep cycle and maintenance free.

The Valen OPzV battery range has several advantages in comparison with standard OPzV batteries, the most significant being the sliding pole technology. This innovation allows the pole terminal to move with any positive plate growth preventing case rupture and ultimately extending the battery life.

Thanks to the sliding pole technology, state of the art certified manufacturing lines, and cyclic gel electrolyte, the Valen OPzV range is able to offer a design life of 18 years making it ideal for use in mission critical cyclic applications.



## Applications include:



UPS



Comms



Datacentre



Mining



Rail



Solar



## Features

### Premium Valve Regulated Lead Acid (VRLA) Design

Valen OPzV battery range is able to be installed and operated in any position (except inverted) making it an attractive option for less accessible areas

### Maintenance-Free Design

Minimises technician time spent at site and on battery related callouts

### Advanced Tubular Gel Technology

Tubular positive plate construction provides reliability and long service life, whilst the negative plate grid design is constructed using lead calcium tin alloy. Both of these advanced features allow for excellent cyclic and deep discharge performances and a design life of 18 years in standby applications

### Specialised OPzV Sliding Pole Design

Specifically designed sliding pole technology minimised the risk of case rupture from positive pole growth; these poles have been designed with high current applications in mind

### Specialised Valen 2V Design

Includes a protective terminal cover as well as insulated intercell links

### IATA Approved

Valen OPzV battery range is safe for air transportation



## Specifications

Voltage	2 Volt nominal
Plates	Lead Calcium Tin Alloy
Container	ABS Plastic
Charge Voltage	Cycle: 2.35V at 25°C Float: 2.25V at 25°C
Design Life	18-years
Electrolyte	Thixotropic Gel Sulphuric Acid
Vent	Self-sealing
Operating Temp*	-20°C to +60°C*

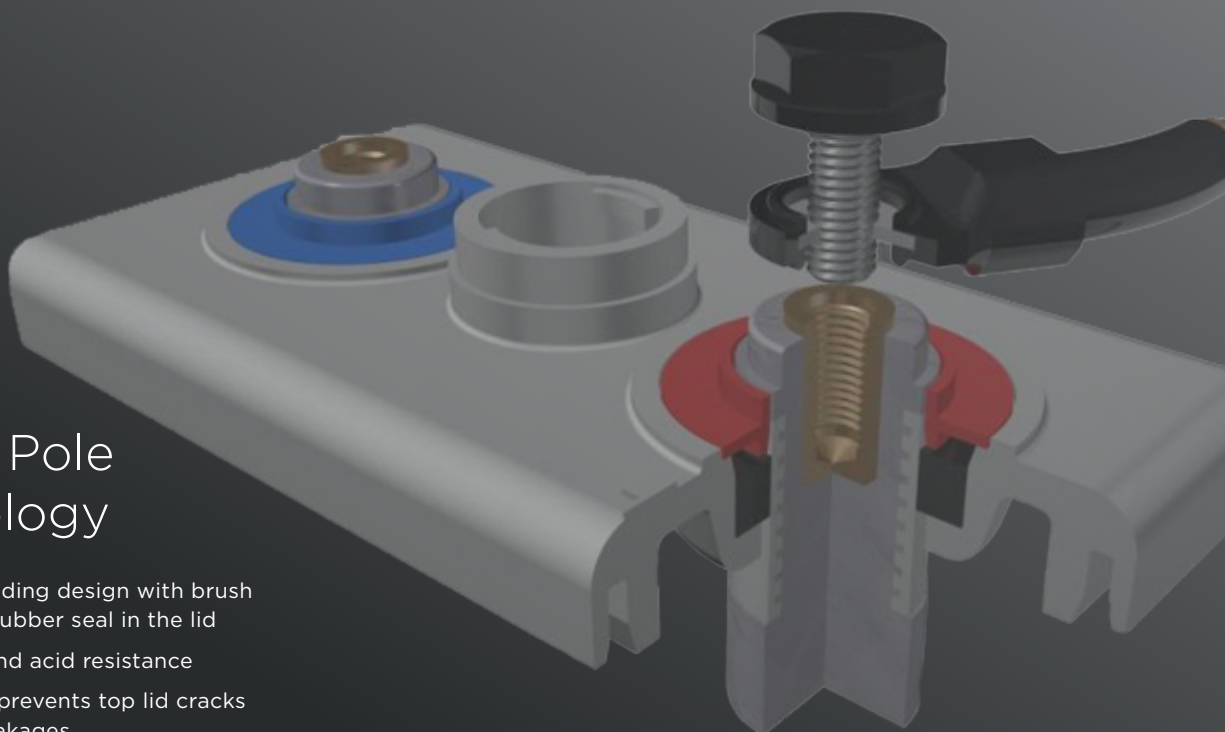
\*However Valen recommend the OPzV batteries be operated in the temperature range of 20°C to 30°C to obtain full life and optimum performance.

## 2V Gel Cells with Sliding Pole Technology

Product Code	Nom. Cap C/10	Nom. Cap C/100	Terminal ^	Dimensions (mm)			Weight (Kg)	Stocked Item
				L	W	H		
2 VO 200	237	311	M10	103	206	354	18.3	–
2 VO 300	356	468	M10	145	206	354	26.4	–
2 VO 400	431	576	M10	124	206	471	30	–
2 VO 500	605	810	M10	166	206	471	40.8	✓
2 VO 600	739	1001	M10	145	206	643	48.2	–
2 VO 800	844	1165	M10	191	210	644	61.2	–
2 VO 1000	1085	1499	M10	233	210	646	75.9	✓
2 VO 1200	1356	1838	M10	275	210	645	90.8	–
2 VO 1500	1591	2085	M10	275	210	796	105	–
2 VO 2000	2168	2840	M10	399	214	771	151	–
2 VO 2500	2891	3785	M10	487	212	769	195.3	–
2 VO 3000	3474	4557	M10	576	212	771	231.4	–

### Sliding Pole Technology

- Premium sliding design with brush insert and rubber seal in the lid
- Hardness and acid resistance
- Effectively prevents top lid cracks and acid leakages
- Positive plate's expansion is safely absorbed
- Optimum current conductivity
- Perfect sealing
- Allow impedance measurements
- Safe and long operational life





# The Valen Story

Valen was first founded as Regal Electro in 1999. Over the next few years, it became apparent that there was a growing need in the industry for a battery supplier who knew not only the characteristics of various technologies, but also understood the technical manufacturing procedures to ensure a quality product.

**2009** Opened premises in Hallam, VIC to ensure fast service & delivery to clients.

**2010** A presence in New Zealand was established.

**2015** Successfully completed its first ENLiFEN Energy Storage Optimiser (ESO) prototype which was put proudly on display at the Comms Connect Exhibition in Melbourne.

**2017** Rebranding and reinvigorating of the core product range, Power Charge renamed to Valen, meaning 'Power' in Latin.

**2018** A Sydney office and logistics centre was opened in April with the view to further improve the level of service offered to clients.

**2018** The company name was changed from Regal Electro to Valen! This decision was made to strengthen the brand and recognition within the industrial battery market.

**2020** Valen has continued to grow year on year and strengthened our position as an End to End Solution provider for Australia and New Zealand.



## Wow Customers through Service

- Our customers want service and we want our employees to go above and beyond for our customers.



## Move Fast & Remain Focused to Get Results

- We are serious about results and we must never lose focus on our goals and our sense of urgency to achieve.
- We believe in working hard and putting in extra effort to get things done.



## Upbeat Positive Attitude

- If our employees have a positive attitude and constantly strive to give your best effort, eventually we will overcome our immediate problems and find you are ready for greater challenges.
- Positive and negative are directions that lead to different outcomes. We expect our employees to move in the right direction each day.



## Challenge the Status Quo

- We are committed to great results and good is the enemy of great. We want our employees to embrace & drive change




## Play as a Team


- Working effectively as a team creates momentum, improves morale.
- The difference between success and failure is a great team and we expect our employees to work together as a team.



  
Wow Customers  
through Service

  
Move Fast &  
Remain Focused  
to Get Results

  
Upbeat Positive  
Attitude

  
Challenge the  
Status Quo

  
Play as a Team

# Our team is ready to deliver!

- ✓ Making the Promise
- ✓ Delivering the Promise
- ✓ Keeping the score



## Complete Solution

Valen are an End-to-End Solution Provider; so we offer you a complete system solution! Being able to offer the complete solution we save you the hassle of having to search for additional suppliers. From design to supply, we are with you every step of the way!



## Quality Control

With our in-house quality control team and state of the art facilities, we ensure the delivery of a unique product that meets and goes beyond your expectations.



## Innovative Products

At Valen we take pride in being original, so we have an exclusive range of products for our clients. These unique products and innovation ensure you stay at the front of an ever changing market.



## Technical Support

Our support doesn't stop once you invest in our products; with our experienced and skilled technical team we assist you even after sale. If you have any questions about your System or Products purchased, our technical team have the answers.



## Personalised Training

Our qualified team of experts are readily available to provide world class training to your team. Thus, ensuring you remain up to date with the latest battery technologies, safety and testing.



**AUSTRALIA**  
**1300 734 253**

[sales@valen.com.au](mailto:sales@valen.com.au)  
[www.valen.com.au](http://www.valen.com.au)

**NEW ZEALAND**  
**0800 734 253**

[sales@valen.co.nz](mailto:sales@valen.co.nz)  
[www.valen.co.nz](http://www.valen.co.nz)